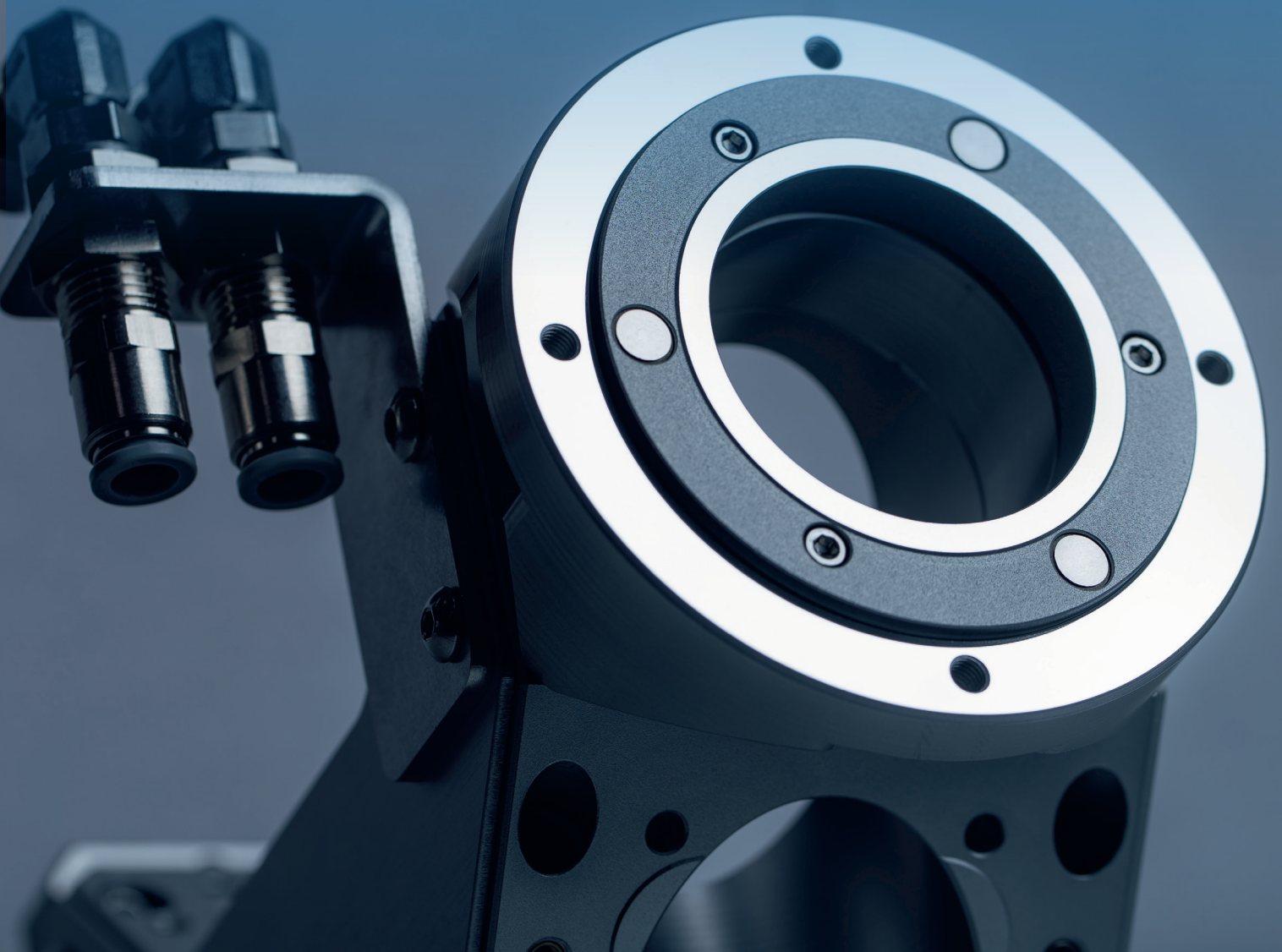
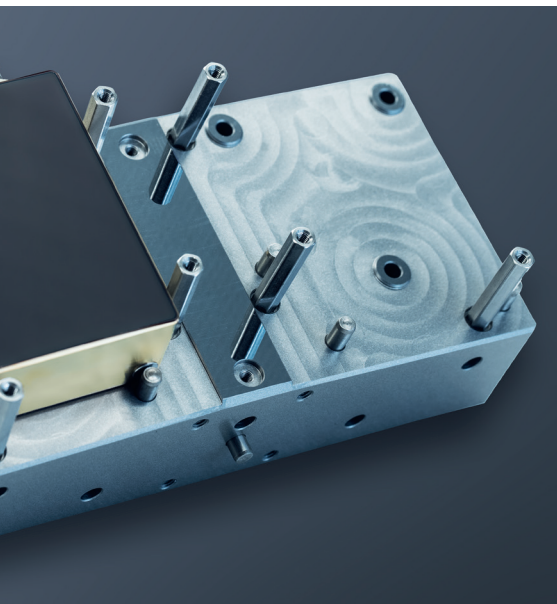


# ULTRA-PRECISE MECHANICAL & OPTOMECHANICAL COMPONENTS





- **Do you have requirements for shapes, surfaces, angles or parallelism that your regular suppliers cannot achieve (reproducibly)?**
- **Is the (long-term) stability of your system poor?**
- **Do you need to level or adjust frequently?**
- **Do you have problems aligning the optical axis?**
- **Your system is not leakproof and particle-free?**
- **You would prefer to buy a „Plug-and-Play & Set-and-Forget“ component?**

**LT Ultra offers** you years of experience in the development, design, and manufacture of ultra-precision optical, mechanical and optomechanical components for various industries and applications.

**Renowned manufacturers in the semiconductor, aerospace and laser industry worldwide have been relying on our expertise in component manufacturing for many years.**

A machine park with self-developed ultra-precision machines, our own optics and component manufacturing, sophisticated measuring equipment and experienced employees allow us to draw on the full potential.

Be it reference or contact surfaces, motorized optomechanical components, mounting and alignment of optics, special requirements for purity, documentation and reproducibility, a few grams or several hundred kilograms – you have come to the right place.

**In particular we offer:**

- Design, layout and manufacture of ultra-precision components with corresponding ultra-precise contact and reference surfaces, taking into account possible roughness, shape and position tolerances
- Assembly and adjustment of ultra-precise and complex optomechanical assemblies, from the above-mentioned components or components according to customer specifications or provided materials
- Documentation according to defined test plans with various measuring and test equipment

**Premises:** temperature-stable & air-conditioned assembly areas, flow boxes, clean rooms

**Metrology:** high-precision coordinate metrology, interferometric form metrology, roughness metrology, reflection and transmission measurement, ellipsometry, polarimetry

**Machines:** machine park with a wide range of ultra-precision machines

